



COMMERCIAL FLOORING

High Performance Decorative Resin Solutions for:

- ✓ Retail Spaces
- ✓ Transportation
- ✓ Event Centers
- ✓ Healthcare & Labs
- ✓ Education
- ✓ Leisure Venues



flowresinamericas.com

Commercial Systems

FlowResin delivers industry experience and quality seamless resin flooring systems for application in both industrial and commercial environments.

FlowResin commercial systems provide much more than just a surface to walk on, offering an array of performance advantages. Clients choose our commercial systems for their unique decorative appearances while still providing wear resistance, stain resistance, chemical resistance, slip resistance and easily cleaned seamless surfaces.

Key Resin Company manufactures FlowResin industrial products in Batavia, Ohio and proudly serves expanding business opportunities across the continent including the USA, Canada, Latin America and the Caribbean. We've provided flooring solutions for clients including Coca Cola, L'Oreal, Cargil, Nestle, NASA, GE and Southwest Airlines. Key Resin Company continues to develop a significant presence in the polymer flooring market with innovative, sustainable solutions for a more positive impact on the construction industry.

Seamless Commercial Resin Flooring Solutions



Offering attractive, eye-catching surfaces for public venues without compromising the performance benefits of traditional polymer flooring.

Available in a range of smooth and flaked finishes, these seamless solutions can be installed in complicated and intricate patterns, manufactured in virtually any color way or using a hand-picked quartz aggregate or flake blend to create stunning surfaces that won't go unnoticed.

Durable formulations take heavy foot traffic and exposure to detergents, sanitizers and cleaning agents in their stride. Plus, the excellent slip resistance properties of resin systems reduces slips and falls to ensure safety underfoot.

Performance Benefits

✓	Attractive finishes to enhance your environment
✓	Custom colors available
✓	Exceptional chemical resistance*
✓	Impressive abrasion resistance for a longer lifespan
✓	Impact resistant, withstanding heavy pedestrian traffic
✓	Seamless finishes for low, easy maintenance

* A detailed chemical resistance chart is available upon request for all Commercial systems. Please contact your local Technical Department for further assistance.

Application Suitability



Retail Stores



Transportation



Event Centers



Healthcare Environments



Education



Leisure Venues



Peran STB Broadcast (120 mils)

A decorative, hard wearing, double broadcast epoxy floor system containing colorful quartz aggregates.



Chemical Resistant:

Protects against a range of acids, alkalis, solvents, alcohol, sanitizers and fuel.



Wear Resistant:

Excellent abrasion, impact and wear resistance in high traffic areas.



Decorative:

Available in a range of vibrant high gloss colors and finishes.



Slip Resistant:

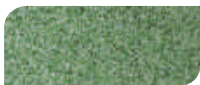
Adjustable, positively textured profile to minimize slip risks in wet or damp areas.



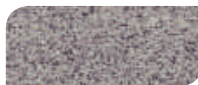
Seamless & Easily Cleaned:

Seamless installation ensures dirt and dust are swiftly and easily cleaned away.

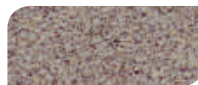
Standard Colors:



Spring Glen



Gray Mist



Rococo



Blueberry Ice



Kitchen Red

COMPRESSIVE STRENGTH:

ASTM C 579	>10,500 psi
------------	-------------

TENSILE STRENGTH:

ASTM D 638	>1,450 psi
------------	------------

FLEXURAL STRENGTH:

ASTM C 580	>2,175 psi
------------	------------

SLIP RESISTANCE:

PTV BS 7976-2 (Using TRRL Rubber Slider)	Dry: 60 Wet: Dependent on specification
---	--

ABRASION RESISTANCE:

ASTM D 4060 CS 17 Wheel, 1000 cycles	0.070g loss
---	-------------

SURFACE HARDNESS:

Koenig Hardness Test	>180 secs
----------------------	-----------

BOND STRENGTH:

Greater than cohesive strength of 3,000 psi concrete, > 220 psi

TEMPERATURE RESISTANCE:

Continuous Exposure:	Up to 140°F
----------------------	-------------

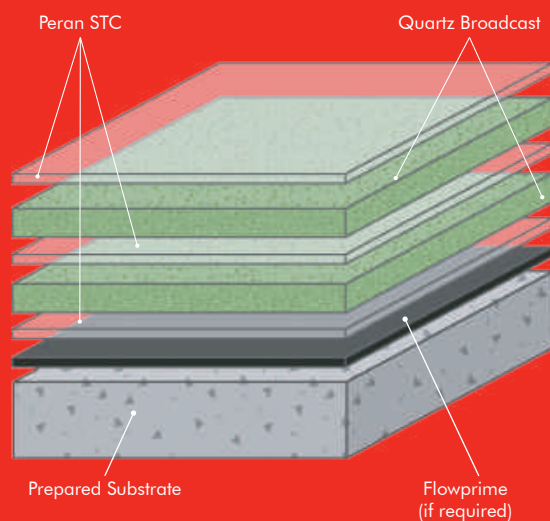
VOC (FLOWCOAT SF41):	12 g/l
----------------------	--------

SPEED OF CURE:	50°F	70°F	90°F
----------------	------	------	------

Light Traffic	30 hrs	16 hrs	8 hrs
---------------	--------	--------	-------

Full Traffic	96 hrs	48 hrs	36 hrs
--------------	--------	--------	--------

Full Chemical Cure	12 days	7 days	3 days
--------------------	---------	--------	--------





Peran Floor Flakes (60 - 80 mils)

A seamless, glossy and chemical resistant decorative flooring system available in a range of flake finishes.



Decorative:

Available in vibrant flake color mixes that can be matched to neighboring interiors.



Easily Cleaned:

Minimal surface joints ensure the floor is easy to clean and sanitize.



Wear Resistant:

Excellent scratch and wear resistance to foot and rubber-wheeled cart traffic.



Stain Resistant:

Protects against spillages in grocery stores, tasting rooms and food service areas.



Chemical Resistant:

Protects against acids, alkalis, caustic soda, salt solutions, oils, fats and sanitizers.

Standard Colors:



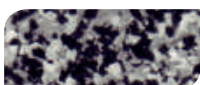
Scarlet



Cobblestone



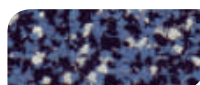
Quicksilver



Domino



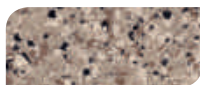
Ice Blue



Midnight



Green Bay



Desert Tan

The applied colors may differ from the examples shown.
For a full color chart and samples, contact your local Key Resin Company office.

COMPRESSIVE STRENGTH:

ASTM C 579	>8,000 psi
------------	------------

TENSILE STRENGTH:

ASTM D 638	>1,450 psi
------------	------------

FLEXURAL STRENGTH:

ASTM C 580	>2,175 psi
------------	------------

SLIP RESISTANCE:

PTV BS 7976-2 (Using TRRL Rubber Slider)	Dry: 56 Wet: 23
---	--------------------

ABRASION RESISTANCE:

ASTM D 4060 CS 17 Wheel, 1000 cycles	0.035g loss
---	-------------

IMPACT RESISTANCE:

ISO 6272	2.2 lb weight > 70 inch 4.4 lb weight > 59 inch
----------	--

VAPOR PERMEABILITY:

ASTM E 96	2.5g/m ² /mm/24 hrs
-----------	--------------------------------

BOND STRENGTH:

Greater than cohesive strength of 3,000 psi concrete,
> 220 psi

TEMPERATURE RESISTANCE:

Continuous Exposure:	Up to 140°F
----------------------	-------------

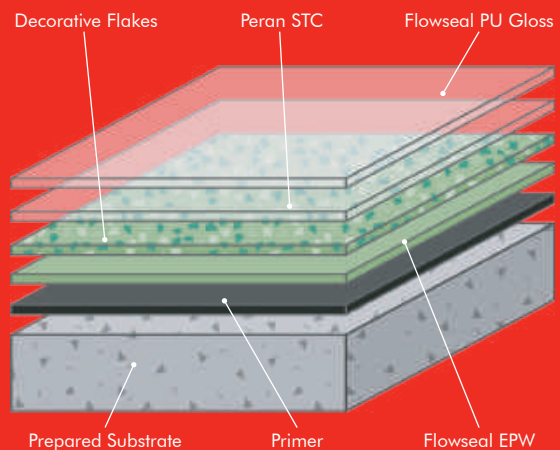
VOC:	12 g/l
------	--------

SPEED OF CURE:	50°F	70°F	90°F
-----------------------	-------------	-------------	-------------

Light Traffic	30 hrs	16 hrs	10 hrs
---------------	--------	--------	--------

Full Traffic	5 days	72 hrs	36 hrs
--------------	--------	--------	--------

Full Chemical Cure	12 days	7 days	4 days
--------------------	---------	--------	--------





Application Suitability

Retail Stores	✓
Transportation	✓
Event Centers	✓
Healthcare & Labs	✓
Education Environments	✓
Leisure Venues	✓



Kristalina (60 - 80 mils)

A sparkling, seamless and smooth epoxy floor system designed to shimmer underfoot in commercial settings.



Decorative:

Available in a range of glittering flake mixes that deliver a sparkling finish.



Easily Cleaned:

Minimal surface joints ensure the floor is easy to clean and sanitize.



Wear Resistant:

Excellent scratch and wear resistance to foot and rubber-wheeled cart traffic.



Stain Resistant:

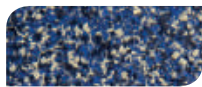
Protects against spillages in grocery stores, tasting rooms and food service areas.



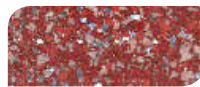
Lifecycle Cost Efficiencies:

Offers significant lifecycle cost savings compared to tile or vinyl floor finishes.

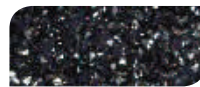
Standard Colors:



Azure Blue



Cranberry



Ebony



Emerald



Granite



Pearl

COMPRESSIVE STRENGTH:

ASTM C 579	>8,000 psi
------------	------------

TENSILE STRENGTH:

ASTM D 638	>1,450 psi
------------	------------

FLEXURAL STRENGTH:

ASTM C 580	>2,175 psi
------------	------------

SLIP RESISTANCE:

PTV BS 7976-2 (Using TRRL Rubber Slider)	Dry: 56 Wet: 23*
---	---------------------

ABRASION RESISTANCE:

ASTM D 4060 CS 17 Wheel, 1000 cycles	0.035g loss
---	-------------

IMPACT RESISTANCE:

ISO 6272	2.2 lb weight > 70 inch 4.4 lb weight > 59 inch
----------	--

VAPOR PERMEABILITY:

ASTM E 96	2.5g/m ² /mm/24 hrs
-----------	--------------------------------

BOND STRENGTH:

Greater than cohesive strength of 3,000 psi concrete, > 220 psi

TEMPERATURE RESISTANCE:

Continuous Exposure:	Up to 140°F
----------------------	-------------

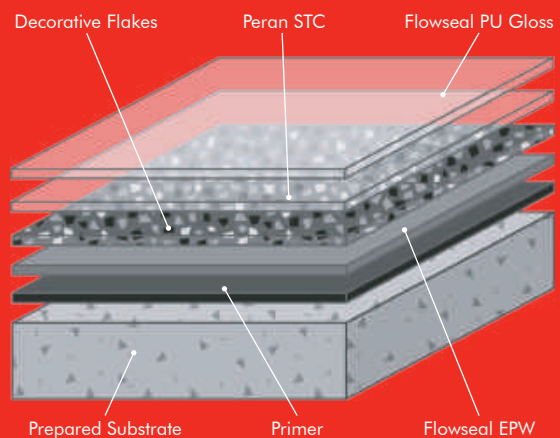
VOC:	12 g/l
------	--------

SPEED OF CURE:	50°F	70°F	90°F
----------------	------	------	------

Light Traffic	30 hrs	16 hrs	10 hrs
---------------	--------	--------	--------

Full Traffic	5 days	72 hrs	36 hrs
--------------	--------	--------	--------

Full Chemical Cure	12 days	7 days	4 days
--------------------	---------	--------	--------



* With glass beads, Wet 40 minimum.

The applied colors may differ from the examples shown.
For a full color chart and samples, contact your local Key Resin Company office.

flowresinamericas.com



Flowseal Ultra Flakes (30 - 40 mils)

A decorative resin system containing color stable flakes in a Polyurea binder.



Decorative:

Available in vibrant flake color mixes that can be matched to neighboring interiors.



Easily Cleaned:

Minimal surface joints ensure the floor is easy to clean and sanitize.



Wear Resistant:

Excellent scratch and wear resistance to foot and rubber-wheeled cart traffic.



Stain Resistant:

Protects against spillages in grocery stores, tasting rooms and food service areas.



Chemical Resistant:

Protects against acids, alkalis, caustic soda, salt solutions, oils, fats and sanitizers.

Standard Colors:



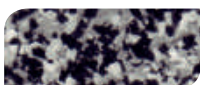
Scarlet



Cobblestone



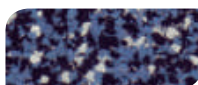
Quicksilver



Domino



Ice Blue



Midnight



Green Bay



Desert Tan

The applied colors may differ from the examples shown.
For a full color chart and samples, contact your local Key Resin Company office.

TENSILE STRENGTH:

ASTM D 638	> 1,250 psi
------------	-------------

TENSILE ELONGATION:

ASTM D 638	25%
------------	-----

SLIP RESISTANCE:

PTV BS 7976-2 (Using TRRL Rubber Slider)	Dry: 56 Wet: 23
---	--------------------

ABRASION RESISTANCE:

ASTM D 4060 CS 17 Wheel, 1000 cycles	0.040g loss
---	-------------

SURFACE HARDNESS:

Koenig Hardness Test	> 180 secs
----------------------	------------

IMPACT RESISTANCE:

ISO 6272	2.2 lb weight > 70 inch 4.4 lb weight > 59 inch
----------	--

WATER ABSORPTION:

ASTM D 570	0.0008%
------------	---------

BOND STRENGTH:

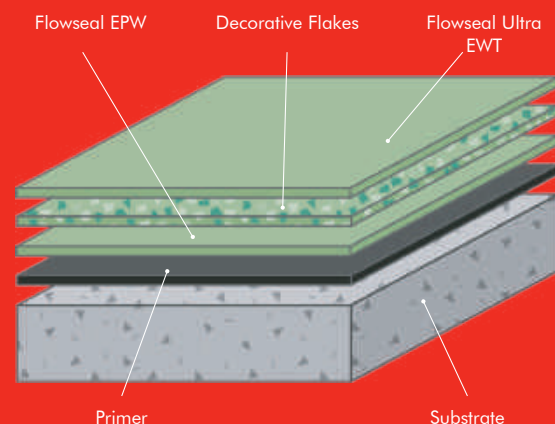
Greater than cohesive strength of 3,000 psi concrete,
> 220 psi

TEMPERATURE RESISTANCE:

Continuous Exposure:	Up to 165°F
----------------------	-------------

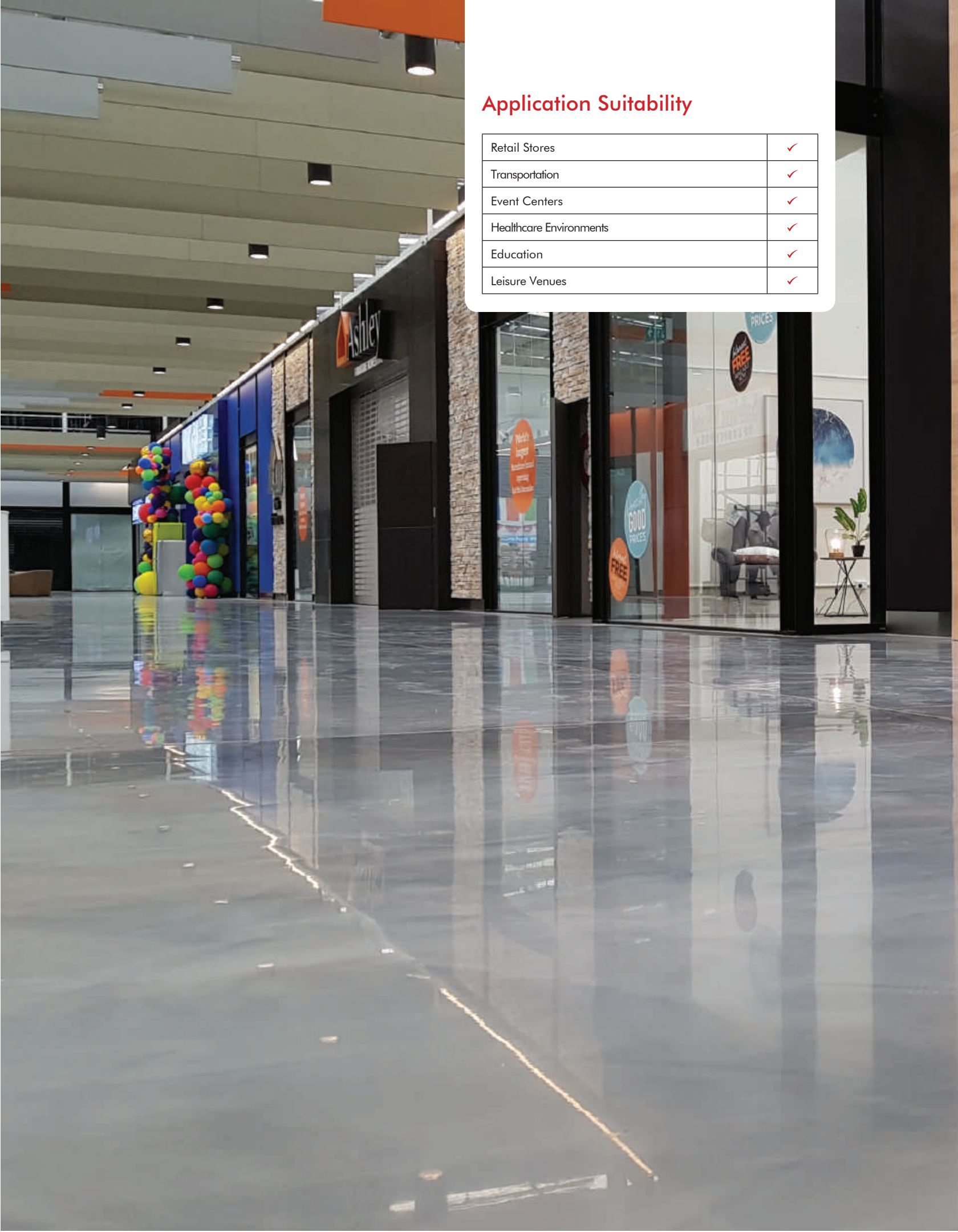
VOC:	12 g/l
------	--------

SPEED OF CURE:	50°F	70°F	90°F
Light Traffic	8 hrs	4 hrs	2 hrs
Full Traffic	48 hrs	24 hrs	12 hrs
Full Chemical Cure	6 days	3 days	2 days



Application Suitability

Retail Stores	✓
Transportation	✓
Event Centers	✓
Healthcare Environments	✓
Education	✓
Leisure Venues	✓





Flowtallics (30 - 35 mils)

A decorative, hard wearing polymer flooring system delivering a unique hand-crafted swirled metallic finish.



Unique Finish:

Installed by skilled craftsmen to deliver a truly one-of-a-kind floor finish.



Decorative:

Available in a range of metallic colors with a decorative and eye-catching swirl effect.



Wear Resistant:

Excellent scratch and wear resistance to foot and rubber-wheeled cart traffic.



Stain Resistant:

Protects against spillages in grocery stores, tasting rooms and food service areas.



Easily Cleaned:

Minimal surface joints ensure the floor is easy to clean and sanitize.

Standard Colors:



Latte



Sangria



Coffee



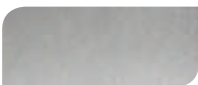
Merlot



Mojito



Blue Lagoon



Cosmo



Gray Goose

The applied colors may differ from the examples shown.
For a full color chart and samples, contact your local Key Resin Company office.

COMPRESSIVE STRENGTH:

ASTM C 579	>11,600 psi
------------	-------------

TENSILE STRENGTH:

ASTM D 638	>1,850 psi
------------	------------

FLEXURAL STRENGTH:

ASTM C 580	>8,700 psi
------------	------------

SLIP RESISTANCE:

PTV BS 7976-2 (Using TRRL Rubber Slider)	Dry: 80 Wet: Dependent on specification
---	--

ABRASION RESISTANCE:

ASTM D 4060 CS 17 Wheel, 1000 cycles	0.080g loss
---	-------------

SURFACE HARDNESS:

Koenig Hardness Test	>180 secs
----------------------	-----------

BOND STRENGTH:

Greater than cohesive strength of 3,000 psi concrete,
> 220 psi

TEMPERATURE RESISTANCE:

Continuous Exposure:	Up to 150°F
----------------------	-------------

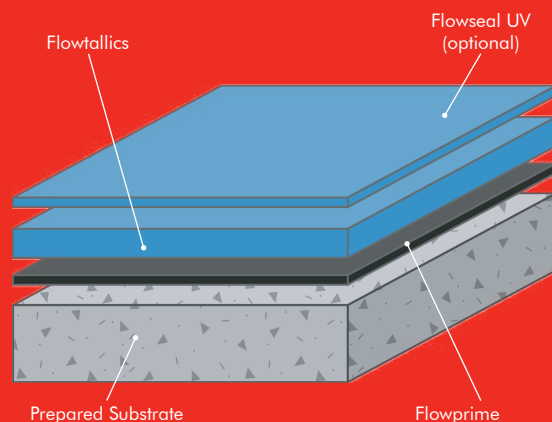
VOC:	12 g/l
------	--------

SPEED OF CURE:	50°F	70°F	90°F
----------------	------	------	------

Light Traffic	30 hrs	16 hrs	10 hrs
---------------	--------	--------	--------

Full Traffic	5 days	72 hrs	36 hrs
--------------	--------	--------	--------

Full Chemical Cure	12 days	7 days	4 days
--------------------	---------	--------	--------





Flowtallics UV (30 - 35 mils)

A decorative, hard wearing and UV stable system delivering a unique hand-crafted swirled metallic finish.



Unique Finish:

Installed by skilled craftsmen to deliver a truly one-of-a-kind floor finish.



Decorative:

Available in a range of metallic colors with a decorative and eye-catching swirl effect.



Wear Resistant:

Excellent scratch and wear resistance to foot and rubber-wheeled cart traffic.



Stain Resistant:

Protects against spillages in grocery stores, tasting rooms and food service areas.



UV Resistant:

100% UV stable formulation available. Prevents the floor from yellowing.

Standard Colors:



Latte



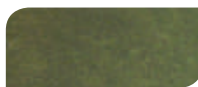
Sangria



Coffee



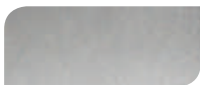
Merlot



Mojito



Blue Lagoon



Cosmo



Gray Goose

COMPRESSIVE STRENGTH:

ASTM C 579 >5,000 psi

TENSILE STRENGTH:

ASTM D 638 >2,200 psi

FLEXURAL STRENGTH:

ASTM C 580 >4,500 psi

SLIP RESISTANCE:

PTV BS 7976-2 (Using TRRL Rubber Slider) Dry: 80 Wet: Dependent on specification

ABRASION RESISTANCE:

ASTM D 4060 CS 17 Wheel, 1000 cycles 0.040g loss

SURFACE HARDNESS:

Koenig Hardness Test >180 secs

BOND STRENGTH:

Greater than cohesive strength of 3,000 psi concrete, > 220 psi

TEMPERATURE RESISTANCE:

Continuous Exposure: Up to 165°F

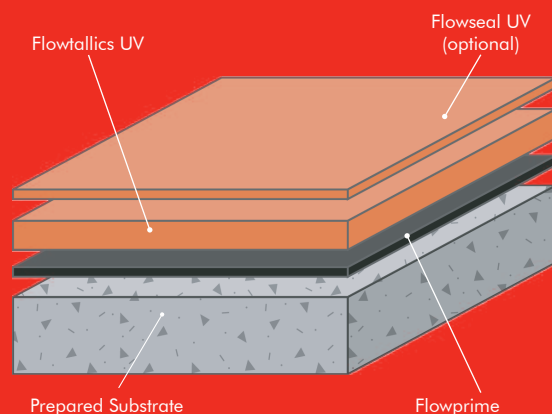
VOC: 10 g/l

SPEED OF CURE: 50°F 70°F 90°F

Light Traffic 8 hrs 4 hrs 2 hrs

Full Traffic 48 hrs 24 hrs 12 hrs

Full Chemical Cure 6 days 3 days 2 days



The applied colors may differ from the examples shown. For a full color chart and samples, contact your local Key Resin Company office.

FlowResin

for the world at your feet™

An industry leader in seamless resin flooring, FlowResin provides much more than just a surface to walk on. Clients choose our seamless resin flooring systems for their appearance and wide array of performance advantages:

- ✓ Antimicrobial
- ✓ Anti-static
- ✓ Chemical Resistant
- ✓ Corrosion Protection
- ✓ Easily Cleaned Surface
- ✓ Fast Cure
- ✓ Impact Resistance
- ✓ Low Odor
- ✓ Low Temperature
- ✓ Moisture Tolerant
- ✓ Slip Resistant
- ✓ Stain Resistant
- ✓ Thermal Shock Resistant
- ✓ Wear Resistant

Key Resin Company manufactures FlowResin commercial and industrial systems in Batavia, Ohio and Phoenix, Arizona with convenient warehouse locations throughout the country. We proudly serve expanding business opportunities across the continent including the USA, Canada, Latin America and the Caribbean.

Let's talk about your next project and the best solution for 'the world at your feet'



*Whilst every care has been taken to ensure that the information included in this document was accurate at the time of printing, we reserve the right to change product specifications at any time without prior notice. The photographs and colors reproduced in this publication are within the constraints of the printing process and are not to be used for matching purposes. All photographs are used for approximate representation only and may not show the actual products on offer. E&OE.