



INDUSTRIAL FLOORING

High Performance Polymer Coating Solutions for:

- ✓ Manufacturing Plants
- ✓ Automotive Facilities
- ✓ Electronic Plants
- ✓ Pharmaceutical
- ✓ Food & Beverage Plants
- ✓ Aviation Hangars



flowresinamericas.com

Industrial Systems

FlowResin delivers industry experience and quality seamless resin flooring systems for application in both industrial and commercial environments.

FlowResin Industrial Systems provide much more than just a surface to walk on, offering an array of performance advantages. Clients choose our industrial systems for their durability, wear resistance, chemical resistance, UV stability, thermal shock resistance, moisture tolerance, easy maintenance and slip resistance capabilities.

Key Resin Company manufactures FlowResin industrial products in Batavia, Ohio and proudly serves expanding business opportunities across the continent including the USA, Canada, Latin America and the Caribbean. We've provided flooring solutions for clients including Coca Cola, L'Oreal, Cargil, Nestle, NASA, GE and Southwest Airlines. Key Resin Company continues to develop a significant presence in the polymer flooring market with innovative, sustainable solutions for a more positive impact on the construction industry.

Seamless Industrial Resin Flooring Solutions



Our industrial floor systems have been designed to deliver durable, wear resistant and easily maintained surfaces for clients working in production plants or heavy industry.

Time-proven flooring systems stand up to heavy forklift, pallet truck and pedestrian traffic while at the same time boast impressive resistance to aggressive chemicals, solvents and cleaning agents. Many systems also provide protection in areas subject to temperature swings and thermal shock.

The Industrial Flooring range offers everything from textured finishes for enhanced slip resistance to UV stability to maintain color vibrancy. Some systems are available in an antistatic grade to protect sensitive electronic equipment and safely ground any electrostatic charge.



Application Suitability

Solutions for light, medium, heavy and very heavy duty industrial applications.

✓	Manufacturing Plants
✓	Automotive Plants
✓	Electronic Plants
✓	Pharmaceutical Plants
✓	Food & Beverage Plants
✓	Aviation Hangars



Standard Colors:



The applied colors may differ from the examples shown.
For a full color chart and samples, contact your local Key Resin Company office.

Flowseal EPW (6 - 8 mils)*

A vapor permeable, water-dispersed epoxy floor coating system available in a range of neutral shades.

Flowseal EPW provides a cost-effective finish that can be used on green concrete or used as a receiving coat for decorative flake aggregates.



Vapor Permeable:

Fully breathable and can be installed onto damp substrates or green concrete.



Solvent Free:

Water dispersed epoxy resin technology free from solvents and VOCs.



Easily Mixed & Applied

Easily mixed and applied using a roller or rubber squeegee.

Technical Profile

SLIP RESISTANCE:

PTV BS 7976-2
(Using TRRL Rubber
Slider)

Dry: 70
Wet: Dependent on
specification

ABRASION RESISTANCE:

ASTM D 4060
CS 17 Wheel, 1000 cycles

0.050g loss

VAPOR PERMEABILITY:

ASTM E 96

20g/m²/mm/24 hrs

BOND STRENGTH:

Greater than cohesive strength of 3,000 psi concrete,
> 220 psi

SURFACE HARDNESS:

Koenig Hardness Test

> 180 secs

TEMPERATURE RESISTANCE:

Continuous Exposure:

Up to 140°F

VOC:

26 g/l

VOLUME SOLIDS:

Approx. 50%

The applied colors may differ from the examples shown.
For a full color chart and samples, contact your local Key Resin Company office.

flowresinamericas.com

*Dry film thickness.



Standard Colors:

100 Light Gray	135 Medium Gray	170 Dark Gray
185 Charcoal	210 White Sand	300 Taupe
435 Tan	440 Khaki	480 Beige
550 Green	600 Slate Blue	650 Light Blue
750 Blue	980 Red	850 Traffic Yellow
950 Traffic Red	White	Black

The applied colors may differ from the examples shown.
For a full color chart and samples, contact your local Key Resin Company office.

Flowcoat WB Satin (25 mils)

A wear resistant epoxy resin system with a clear, satin finish polyacrylic-aliphatic polyurethane top coat.



Low Odor:

Low odor installation, non-toxic, and solvent-free formulation.



UV Resistant:

Exhibits excellent UV color stability over time and will not become brittle with age.



Seamless & Easily Cleaned:

Seamless installation ensures dirt and dust are swiftly and easily cleaned away.



Low Maintenance:

End of life surfaces can be over-coated with minimal surface preparation.



Minimizes Surface Imperfections:

Reduced gloss of the finish minimizes the reflection of minor surface imperfections.

PERMEABILITY:

ASTM E 96	0.0042 perm. -in
-----------	------------------

ADHESION:

ASTM D 4541	>400 psi (100% Concrete Failure)
-------------	-------------------------------------

ABRASION RESISTANCE:

ASTM D 4060 CS 17 Wheel, 1000 cycles	0.035g loss
---	-------------

SURFACE HARDNESS:

Koenig Hardness Test	182 secs
----------------------	----------

POT LIFE: *	45 minutes
-------------	------------

TEMPERATURE RESISTANCE:

Continuous Exposure:	Up to 160°F
----------------------	-------------

VOC:	<50 g/l
------	---------

SPEED OF CURE:	50°F	70°F	90°F
Light Traffic	24 hrs	16 hrs	12 hrs
Full Traffic	36 hrs	24 hrs	16 hrs
Full Chemical Cure	14 days	7 days	72 hrs

The applied colors may differ from the examples shown.
For a full color chart and samples, contact your local Key Resin Company office.




flowresinamericas.com

*Care must be taken to not use this system beyond it's potlife. A visible end point will not always be apparent.

Flowcoat ESD (20 - 25 mils)

A 100% solids, chemical resistant seamless epoxy floor coating system designed to dissipate electrostatic charge.

Flowcoat ESD provides a hardwearing, easily cleaned surface in sensitive electronic manufacturing environments.

- 
Electrostatic Dissipative:*
 Electrical resistance to ground less than 1×10^9 ohms.
- 
ANSI S20.20-2014 Compliant:
 Meets parameters derived from standard test methods for flooring outlined in S20.20.
- 
Low Body Voltage Values:
 Minimizes the charge created by movement of people and equipment.

Technical Profile

COMPRESSIVE STRENGTH:	
ASTM C 579	>11,600 psi
FLEXURAL STRENGTH:	
ASTM C 580	8,700 psi
RESISTANCE TO GROUND:	
ANSI ESD STM 97.1	<1.0 x 10 ⁹ ohms
TYPICAL RESISTANCE TO GROUND:	
ANSI ESD STM 97.1	<3.5 x 10 ⁷ ohms
ABRASION RESISTANCE:	
ASTM D 4060 CS 17 Wheel, 1000 cycles	0.06g loss
SLIP RESISTANCE:	
BS 7976-2	Dry : 80 Wet : Dependent on specification
TEMPERATURE RESISTANCE:	
Continuous Exposure:	160°F
VOC:	20 g/l

*To be used in conjunction with suitable ESD footwear.



Standard Colors:

		
ESD105 Grey	ESD170 Dark Grey	ESD185 Charcoal
		
ESD185 Toffee	ESD435 Tan	ESD440 Khaki
		
ESD480 Beige	ESD550 Green	ESD600 Slate Blue
		
ESD650 Light Blue	ESD750 Blue	ESD980 Red

The applied colors may differ from the examples shown.
For a full color chart and samples, contact your local Key Resin Company office.



Flowcoat HTS (25 mils)

A durable polyurethane floor coating system characterized by high abrasion and chemical resistance.

Flowcoat HTS is a high-solids, low odor and UV light stable flooring system designed for areas subject to heavy traffic.



Wear Resistant:

Excellent abrasion and wear resistance in high traffic areas.



Chemical Resistant:

Protects against a range of acids, alkalis, solvents, alcohol, sanitizers and fuel.



UV Resistant:

Exhibits excellent UV color stability over time and will not become brittle with age.

Technical Profile

TENSILE STRENGTH:

ASTM D 638	>2,150 psi
------------	------------

TENSILE ELONGATION:

ASTM D 638	5%
------------	----

SLIP RESISTANCE:

PTV BS 7976-2 (Using TRRL Rubber Slider)	Dry: 70 Wet : Dependent on specification
---	---

ABRASION RESISTANCE:

ASTM D 4060 CS 17 Wheel, 1000 cycles	0.010g loss
---	-------------

BOND STRENGTH:

Greater than cohesive strength of 3,000 psi concrete, > 220 psi

SURFACE HARDNESS:

Koenig Hardness Test	>180 secs
----------------------	-----------

TEMPERATURE RESISTANCE:

Continuous Exposure:	Up to 160°F
----------------------	-------------

VOC (FLOWSEAL UV)

<100g/l



Standard Colors:



The applied colors may differ from the examples shown. For a full color chart and samples, contact your local Key Resin Company office.





Standard Colors:

100 Light Gray	135 Medium Gray	170 Dark Gray
185 Charcoal	210 White Sand	300 Taupe
435 Tan	440 Khaki	480 Beige
550 Green	600 Slate Blue	650 Light Blue
750 Blue	980 Red	850 Traffic Yellow
950 Traffic Red	White	Black

The applied colors may differ from the examples shown.
For a full color chart and samples, contact your local Key Resin Company office.

Flowcoat SF41 (25 - 30 mils)

A time-proven, cost-effective and wear resistant epoxy floor coating system with adjustable anti-slip properties.

Flowcoat SF41 offers high abrasion, slip and chemical resistance properties, the system is ideal for facilities subject to heavy processes.



Slip Resistant:

Adjustable, positively textured profile to minimize slip risks in wet or damp areas.



Chemical Resistant:

Protects against a range of acids, alkalis, solvents, alcohol, sanitizers and fuel.



Low Maintenance:

End of life surfaces can be over-coated with minimal surface preparation.

Technical Profile

COMPRESSIVE STRENGTH:

ASTM C 579	>10,500 psi
------------	-------------

TENSILE STRENGTH:

ASTM D 638	>2,100 psi
------------	------------

FLEXURAL STRENGTH:

ASTM C 580	>8,700 psi
------------	------------

SLIP RESISTANCE:

PTV BS 7976-2 (Using TRRL Rubber Slider)	Dry: 60 Wet: Dependent on specification
---	--

ABRASION RESISTANCE:

ASTM D 4060 CS 17 Wheel, 1000 cycles	0.080g loss
---	-------------

SURFACE HARDNESS:

Koenig Hardness Test	>180 secs
----------------------	-----------

TEMPERATURE RESISTANCE:

Continuous Exposure:	Up to 150°F
----------------------	-------------

VOC:	12 g/l
------	--------

The applied colors may differ from the examples shown.
For a full color chart and samples, contact your local Key Resin Company office.

flowresinamericas.com



Standard Colors:

100 Light Gray	135 Medium Gray	170 Dark Gray
185 Charcoal	210 White Sand	300 Taupe
435 Tan	440 Khaki	480 Beige
550 Green	600 Slate Blue	650 Light Blue
750 Blue	980 Red	850 Traffic Yellow
950 Traffic Red	White	Black

The applied colors may differ from the examples shown.
For a full color chart and samples, contact your local Key Resin Company office.

Flowcoat SF41 HCS (35 mils)

A chemical resistant epoxy floor coating system designed for use in aircraft hangars.



Chemical Resistant:

Protects against alkalis, hydraulic fluids, battery acid and jet fuel including Skydrol.



Slip Resistant:

Adjustable, positively textured profile to minimize slip risks in wet or damp areas.



Wear Resistant:

Excellent abrasion, impact and wear resistance in high traffic areas.



Low Maintenance:

Easy cleaning and end of life surfaces can be over-coated with low preparation.

Technical Profile

COMPRESSIVE STRENGTH:	
ASTM C 579	>10,500 psi
TENSILE STRENGTH:	
ASTM D 638	>2,100 psi
FLEXURAL STRENGTH:	
ASTM C 580	>8,700 psi
SLIP RESISTANCE:	
PTV BS 7976-2 (Using TRRL Rubber Slider)	Dry: 60 Wet: Dependent on specification
ABRASION RESISTANCE:	
ASTM D 4060 CS 17 Wheel, 1000 cycles	0.010g loss
SURFACE HARDNESS:	
Koenig Hardness Test	>180 secs
TEMPERATURE RESISTANCE:	
Continuous Exposure:	Up to 150°F
VOC:	12 g/l

The applied colors may differ from the examples shown.
For a full color chart and samples, contact your local Key Resin Company office.

flowresinamericas.com



Standard Colors:



The applied colors may differ from the examples shown.
For a full color chart and samples, contact your local Key Resin Company office.

Flowcoat OP (25 - 30 mils)

A durable and chemical resistant epoxy floor coating system with a unique and consistent orange-peel finish.



Orange Peel Effect:

Designed to create a consistent orange peel effect across the surface of the floor.



Cost Effective:

Offers an excellent balance between speed, cost and quality.



Chemical Resistant:

Protects against a range of acids, alkalis, solvents, alcohol, sanitizers and fuel.



Low Maintenance:

End of life surfaces can be over-coated with minimal surface preparation.



Seamless & Easily Cleaned:

Seamless installation ensures dirt and dust are swiftly and easily cleaned away.

Technical Profile

COMPRESSIVE STRENGTH:

ASTM C 579 > 10,500 psi

FLEXURAL STRENGTH:

ASTM C 580 > 8,700 psi

TENSILE STRENGTH:

ASTM D 638 > 2,100 psi

SURFACE HARDNESS:

Koenig Hardness Test < 180 secs

ABRASION RESISTANCE:

ASTM D 4060
CS 17 Wheel, 1000 cycles 0.065g loss

SLIP RESISTANCE:

PTV BS 7976-2 (Using TRRL Rubber Slider)
Dry : 65
Wet : Dependent on specification

TEMPERATURE RESISTANCE:

Continuous Exposure: Up to 150°F

VOC: 12 g/l

The applied colors may differ from the examples shown.
For a full color chart and samples, contact your local Key Resin Company office.

flowresinamericas.com



Flowseal PA

Flowseal PA is a clear, two component, fast curing UV stable and chemical resistant gloss Polyaspartic.

Provides extended working time compared to traditional Polyaspartic coatings. Designed for use as a fast curing UV stable sealer or receiving coat for flakes and quartz broadcast systems.



Fast Cure:

Fully operational in 3-4 hours. Fast cure options allow operation in 90 mins.



Seamless & Easily Cleaned:

Seamless installation ensures dirt and dust are swiftly and easily cleaned away.



Chemical Resistant:

Protects against food by-products, fats, hot oils, blood, sugar and acids.



Cost Effective:

Offers an excellent balance between speed, cost and quality.

Technical Profile

COVERAGE RATES:

100-110 sq ft/gal as lock coat on textured floors
200-250 sq ft/gal on non-textured floors

ELONGATION AT BREAK:

ATSM D638 10%

ABRASION RESISTANCE:

ATSM D4060/CS17 Wheels 50 mg loss

VOC: 80 g/l

Flowseal PA over Quartz Broadcast





Standard Colors:

100 Light Gray	135 Medium Gray	170 Dark Gray
185 Charcoal	210 White Sand	300 Taupe
435 Tan	440 Khaki	480 Beige
550 Green	600 Slate Blue	650 Light Blue
750 Blue	980 Red	850 Traffic Yellow
950 Traffic Red	White	Black

The applied colors may differ from the examples shown.
For a full color chart and samples, contact your local Key Resin Company office.

Flowtex (3/16" - 1/4")

A trowel applied epoxy floor mortar with excellent durability, abrasion resistance and ease of application.

Flowtex offers excellent wear, scratch and chemical resistance to deliver a robust surface in heavy-duty processing environments.



Easily Applied:

Special sand blends ensures the material is easy to trowel and close.



Wear Resistant:

Excellent abrasion, impact and scratch resistance in high traffic areas.



Chemical Resistant:

Protects against a range of acids, alkalis, solvents, alcohol, sanitizers and fuel.

Technical Profile

COMPRESSIVE STRENGTH:

ASTM C 579	>10,500 psi
------------	-------------

TENSILE STRENGTH:

ASTM C 307	>1,600 psi
------------	------------

FLEXURAL STRENGTH:

ASTM C 580	>4,200 psi
------------	------------

FLEXURAL MODULES OF ELASTICITY:

ASTM D 790	2.01 x 10 ⁶ psi
------------	----------------------------

SLIP RESISTANCE:

PTV BS 7976-2 (Using TRRL Rubber Slider)	Dry: 70 Wet: Dependent on specification
---	--

IMPACT RESISTANCE:

ISO 6272	2.2 lb weight > 70 inch 4.4 lb weight > 59 inch
----------	--

TEMPERATURE RESISTANCE:

Continuous Exposure:	Up to 140°F
Intermittent Spills:	Up to 200°F

VOC (FLOWCOAT SF41):	10 g/l
----------------------	--------

The applied colors may differ from the examples shown.
For a full color chart and samples, contact your local Key Resin Company office.

flowresinamericas.com



Standard Colors:



The applied colors may differ from the examples shown.
For a full color chart and samples, contact your local Key Resin Company office.



Flowfresh MF (3/16" - 1/4")

A self-leveling, International HACCP certified and smooth matte antimicrobial treated cementitious urethane floor system.

Flowfresh MF provides a vibrantly colored, easy clean floor finish, which is suited to use in medium duty dry-service zones including packaging areas.



Polygiene®:

Contains a silver ion antimicrobial additive to protect the surface.



Easily Cleaned:

Minimal surface joints ensure the floor is easy to clean and sanitize.



Chemical Resistant:

Protects against food by-products, fats, hot oils, blood, sugar and acids.

Technical Profile

COVERAGE RATES: (40 LB UNIT)

22 sq ft/unit at 3/16"
17 sq ft/unit at 1/4"

COMPRESSIVE STRENGTH:

ASTM C 579 >7,250 psi

TENSILE STRENGTH:

ASTM C 307 1,740 psi

COEFFICIENT OF THERMAL EXPANSION:

ASTM C531 2.2×10^{-5} in/in/°F

FLEXURAL STRENGTH:

ASTM C 580 2,900 psi

TEMPERATURE RESISTANCE:

Continuous Exposure: 180°F

Intermittent Spills: 200°F

VOC: 7 g/l

The applied colors may differ from the examples shown.
For a full color chart and samples, contact your local Key Resin Company office.

flowresinamericas.com

Flowfresh IF (3/8" - 1/2")

An exceptionally heavy duty, trowel applied and HACCP International certified iron filled cementitious urethane mortar.



Polygiene®:

Contains a silver ion antimicrobial additive to protect the surface.



Chemical Resistant:

Protects against food by-products, fats, hot oils, blood, sugar and acids.



Slip Resistant:

Positively textured profile to minimize slip risks in wet or damp areas.



Temperature Resistant:

Resistant to temperatures of up to 250°F and suitable for steam cleaning.



Easily Maintained:

Can be patch-repaired in-situ to minimize renovation costs.

Technical Profile

COVERAGE RATES: (62 LB UNIT)

14 sq ft/unit at 3/8"
10 sq ft/unit at 1/2"

COMPRESSIVE STRENGTH:

ASTM C 579 8,000 psi

TENSILE STRENGTH:

ASTM C 307 1,450 psi

COEFFICIENT OF THERMAL EXPANSION:

ASTM C531 1.1×10^{-5} in/in/°F

FLEXURAL STRENGTH:

ASTM C 580 2,900 psi

TEMPERATURE RESISTANCE:

Continuous Exposure: 220°F

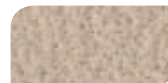
Intermittent Spills: 250°F

VOC: 5 g/l

Standard Colors:



Cream



Tan



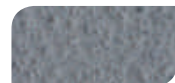
Khaki



Red



Black



Common Grey



Dark Grey



Green



Blue



Safety Yellow

The applied colors may differ from the examples shown.
General wear on Safety Yellow may be more visible.
For a full color chart and samples, contact your local Key Resin Company office.

Discover More...

As the experts in specialty polymer flooring solutions, we offer technical information and specification advice to support you in selecting, installing and caring for the correct flooring choice for your needs.

✓	White Papers & Technical Testing
✓	Product Literature
✓	System Data Sheets
✓	Product Data Sheets
✓	Safety Data Sheets

Available at flowresinamericas.com



FlowResin

for the world at your feet™

An industry leader in seamless resin flooring, FlowResin provides much more than just a surface to walk on. Clients choose our seamless resin flooring systems for their appearance and wide array of performance advantages:

- ✓ Antimicrobial
- ✓ Chemical Resistant
- ✓ Easily Cleaned Surface
- ✓ Impact Resistance
- ✓ Low Temperature
- ✓ Slip Resistant
- ✓ Thermal Shock Resistant
- ✓ Anti-static
- ✓ Corrosion Protection
- ✓ Fast Cure
- ✓ Low Odor
- ✓ Moisture Tolerant
- ✓ Stain Resistant
- ✓ Wear Resistant

Key Resin Company manufactures FlowResin commercial and industrial systems in Batavia, Ohio and Phoenix, Arizona with convenient warehouse locations throughout the country. We proudly serve expanding business opportunities across the continent including the USA, Canada, Latin America and the Caribbean.

Let's talk about your next project and the best solution for 'the world at your feet'



*Whilst every care has been taken to ensure that the information included in this document was accurate at the time of printing, we reserve the right to change product specifications at any time without prior notice. The photographs and colors reproduced in this publication are within the constraints of the printing process and are not to be used for matching purposes. All photographs are used for approximate representation only and may not show the actual products on offer. E&OE.