



# FLOWFAST

Fast Cure MMA Flooring Solutions for:

- ✓ Retail Stores
- ✓ Education & Offices
- ✓ Leisure Venues
- ✓ Food & Beverage
- ✓ Healthcare
- ✓ Automotive Plants



[flowresinamericas.com](http://flowresinamericas.com)

## Flowfast Fast Cure Systems

---

**FlowResin delivers industry experience and quality seamless resin flooring systems for application in both industrial and commercial environments.**

FlowResin Flowfast provides much more than just a surface to walk on, offering numerous performance advantages. Clients choose Flowfast systems for their incredible bonding capabilities, high compressive strength, longevity, no extensive surface preparation, rapid installation and cure times.

Key Resin Company manufactures FlowResin Flowfast in Batavia, Ohio and proudly serves expanding business opportunities across the continent including the USA, Canada, Latin America and the Caribbean. We've provided flooring solutions for clients including Coca Cola, L'Oreal, Cargil, Nestle, NASA, GE and Southwest Airlines. Key Resin Company continues to develop a significant presence in the polymer flooring market with innovative, sustainable solutions for a more positive impact on the construction industry.

---

## Introduction to the Flowfast Range



Using methyl methacrylate (MMA) technology, Flowfast floor solutions are fully operational just 60 minutes after application, delivering unrivalled installation and cure times as well as an eye-catching finish.

Available in a creative mix of colors and finishes as well as offering complete flexibility of design, with the capability to create custom patterns and colors for a totally personalized solution, Flowfast can be used in a range of commercial settings.

What's more, offering excellent chemical, wear and slip resistance, Flowfast is also suited to the food processing, mechanical, chemical and electronic goods industries where its seamless, durable finish stands up to the service conditions of these demanding areas.

# FAQs Flowfast MMA Flooring

## What is Methyl Methacrylate (MMA) Flooring?

Methyl Methacrylate derives from the petrochemical industry and is used in an assortment of applications including bone surgeries, dentistry, road marking and Plexiglas manufacture as well as flooring. MMA flooring is 100% non-porous and monolithic creating an impervious, pinhole free surface offering a high level of protection against chemical attack and an inherently hygienic surface.

## What are the benefits of MMA Flooring?

MMA flooring offers rapid installation and cure times, incredible bond strength and high compressive strengths as well as a wide installation temperature range. The greatest advantage of MMA flooring over epoxy or cementitious urethane alternatives is the

material's ability to chemically bond to itself at anytime with no extensive preparation necessary. The longevity of MMA floors results from deep penetrating primers that create a strong chemical and mechanical bond to the substrate - MMA installations last in excess of 15 years with the correct care regime.

## Where can MMA Flooring be installed?

MMA flooring can be installed on a host of substrates including concrete, steel, tiles, other resin materials and marine applications. MMA flooring can be installed within a wide temperature range and in conditions as low as -20 F, which makes it an ideal choice for unheated construction sites or supermarkets using back-of-house cold stores, coolers and blast freezers to store food produce.

## Flowfast Application Suitability



Retail & Grocery Stores



Education Environments



Leisure Venues



Food & Beverage



Healthcare Environments



Automotive Plants

## Resistance Chart

ACIDS		ALKALIS		ORGANIC		OTHER			
Acetic Acid 25%	✓	Caustic Soda	✓	Petroleum	✓	Crude Oil	✓	Crude Oil	✓
Hydrochloric Acid 37%	✓	Potassium Hydroxide 50%	✓	Formaldehyde 37%	✓	Calcium Chloride	✓	Calcium Chloride	✓
Lactic Acid 90%	✓	Lime Milk	✓	Diesel	✓	Bleach	✓	Bleach	✓
Nitric Acid 10%	✓	Sodium Hydroxide 30%	✓	Kerosene	✓	Blood	✓	Blood	✓
Sulphuric 50%	✓	Ammonia 10%	✓	White Spirit	✓	Hydrogen Peroxide 30%	✓	Hydrogen Peroxide 30%	✓
Tartaric Acid 50%	✓	Aluminum Hydroxide	✓	Turpentine	✓	Sodium Chloride	✓	Sodium Chloride	✓

\*A chemical resistance chart is available on request.



## Flowfast Flakes (120 mils)

An eye-catching, wear resistant and fast cure MMA flooring system with a decorative flake finish.



### Fast Cure:

Accelerates cure time, providing a fully operational surface in just 60 minutes.



### Decorative:

Available in vibrant flake color mixes that can be matched to neighboring interiors.



### Wear Resistant:

Excellent scratch and wear resistance to foot and rubber-wheeled cart traffic.



### Stain Resistant:

Protects against spillages and is not susceptible to staining or discoloration.



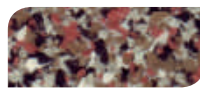
### UV Resistant:

Exhibits excellent UV color stability over time and will not become brittle with age.

### Standard Colors:



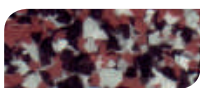
Domino



Cobblestone



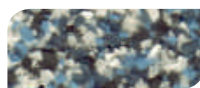
Quicksilver



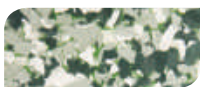
Scarlet



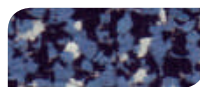
Desert Tan



Ice Blue



Green Bay



Midnight

The applied colors may differ from the examples shown. For a full color chart and samples, contact your local Key Resin Company office.

### SLIP RESISTANCE: (WITH ALUMINIUM OXIDE)

BS 7976-2

Dry: 63  
Wet: 56

### IMPACT RESISTANCE:

ISO 6272

2.2 lb weight > 70 in  
4.4 lb weight > 59 in

### COMPRESSIVE STRENGTH:

ASTM C 579

11,600 psi

### BOND STRENGTH:

Greater than cohesive strength of 3,000 psi concrete,  
> 220 psi

### TENSILE STRENGTH:

ASTM C 307

2,900 psi

### FLEXURAL STRENGTH:

ASTM C 580

4,350 psi

### ABRASION RESISTANCE:

ASTM D 4060  
CS 17 Wheel, 1000 cycles

0.085g loss

### TEMPERATURE RESISTANCE:

Continuous Exposure:

Up to 160°F

### VOC:

<50 g/l

### COEFFICIENT OF FRICTION:

ASTM D 2047

Exceeds ADA  
recommendations

### SPEED OF CURE:

32°F

70°F

90°F

Light Traffic

60 mins

45 mins

45 mins

Full Traffic

90 mins

60 mins

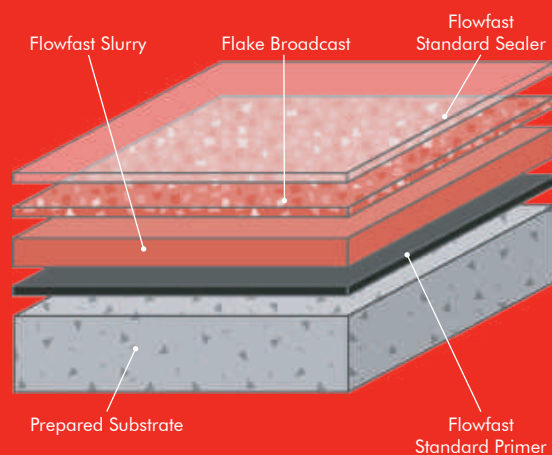
60 mins

Full Chemical Cure

120 mins

90 mins

90 mins



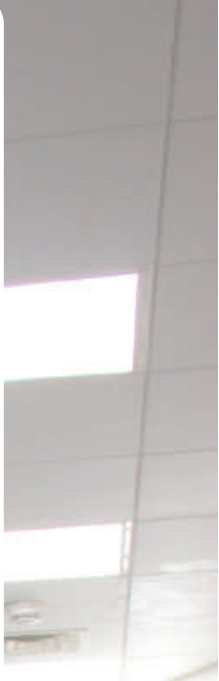
## Application Suitability

Retail & Grocery Stores	✓
Leisure Venues	✓
Office & Education Facilities	✓
Event Centers	✓
Transportation	✓
Healthcare Environments	✓
Food & Beverage Facilities	
Automotive Plants	
Industrial Environments	



## Application Suitability

Retail & Grocery Stores	✓
Leisure Venues	✓
Office & Education Facilities	✓
Event Centers	✓
Transportation	✓
Healthcare Environments	✓
Food & Beverage Facilities	✓
Automotive Plants	✓
Industrial Environments	✓





## Flowfast Quartz (160 mils)

A robust, wear resistant and fast cure MMA flooring system with a decorative hand broadcast quartz finish.



### Fast Cure:

Accelerates cure time, providing a fully operational surface in just 60 minutes.



### Slip Resistant:

Adjustable, positively textured profile to minimize slip risks in wet or damp areas.



### Chemical Resistant:

Protects against acids, alkalis, caustic soda, salt solutions, oils, fats and sanitizers.



### Decorative:

Available in vibrant quartz color mixes that can be matched to neighboring interiors.



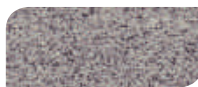
### UV Resistant:

Exhibits excellent UV color stability over time and will not become brittle with age.

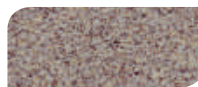
## Standard Colors:



Spring Glen



Gray Mist



Rococo



Blueberry Ice



Kitchen Red

### SLIP RESISTANCE:

BS 7976-2

Dry: 80  
Wet: 60

### IMPACT RESISTANCE:

ISO 6272

2.2 lb weight > 70 in  
4.4 lb weight > 59 in

### COMPRESSIVE STRENGTH:

ASTM C 579

11,600 psi

### BOND STRENGTH:

Greater than cohesive strength of 3,000 psi concrete,  
> 220 psi

### TENSILE STRENGTH:

ASTM C 307

2,900 psi

### FLEXURAL STRENGTH:

ASTM C 580

4,350 psi

### ABRASION RESISTANCE:

ASTM D 4060  
CS 17 Wheel, 1000 cycles

0.080g loss

### TEMPERATURE RESISTANCE:

Continuous Exposure:

Up to 160°F

### VOC:

<50 g/l

### COEFFICIENT OF FRICTION:

ASTM D 2047

Exceeds ADA  
recommendations

### SPEED OF CURE:

32°F

70°F

90°F

Light Traffic

60 mins

45 mins

45 mins

Full Traffic

90 mins

60 mins

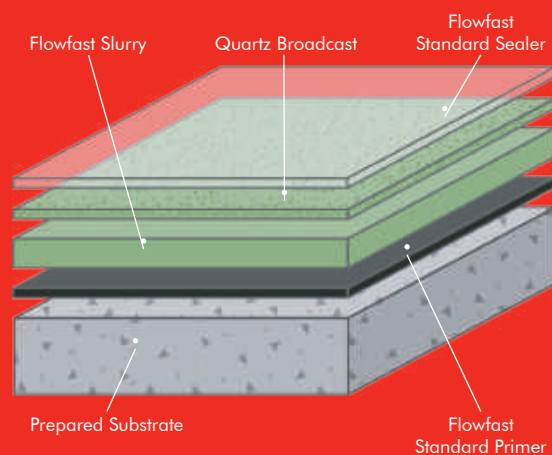
60 mins

Full Chemical Cure

120 mins

90 mins

90 mins



The applied colors may differ from the examples shown.  
For a full color chart and samples, contact your local Key Resin Company office.

## Flowfast Quartz TR (160 mils)

A trowel-applied, wear resistant and fast cure MMA flooring system with a robust decorative quartz finish.



### Fast Cure:

Accelerates cure time, providing a fully operational surface in just 60 minutes.



### Slip Resistant:

Adjustable, positively textured profile to minimize slip risks in wet or damp areas.



### Chemical Resistant:

Protects against acids, alkalis, caustic soda, salt solutions, oils, fats and sanitizers.



### Decorative:

Available in vibrant quartz color mixes that can be matched to neighboring interiors.



### UV Resistant:

Exhibits excellent UV color stability over time and will not become brittle with age.

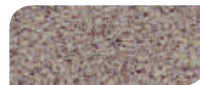
## Standard Colors:



Spring Glen



Gray Mist



Rococo



Blueberry Ice



Kitchen Red

### SLIP RESISTANCE:

BS 7976-2

Dry: 80  
Wet: 60

### IMPACT RESISTANCE:

ISO 6272

2.2 lb weight > 70 in  
4.4 lb weight > 59 in

### COMPRESSIVE STRENGTH:

ASTM C 579

11,600 psi

### BOND STRENGTH:

Greater than cohesive strength of 3,000 psi concrete,  
> 220 psi

### TENSILE STRENGTH:

ASTM C 307

2,900 psi

### FLEXURAL STRENGTH:

ASTM C 580

4,350 psi

### ABRASION RESISTANCE:

ASTM D 4060  
CS 17 Wheel, 1000 cycles

0.085g loss

### TEMPERATURE RESISTANCE:

Continuous Exposure:

Up to 160°F

### VOC:

<50 g/l

### COEFFICIENT OF FRICTION:

ASTM D 2047

Exceeds ADA  
recommendations

### SPEED OF CURE:

32°F

70°F

90°F

Light Traffic

60 mins

45 mins

45 mins

Full Traffic

90 mins

60 mins

60 mins

Full Chemical Cure

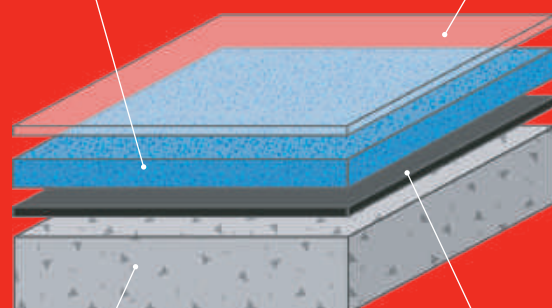
120 mins

90 mins

90 mins

Flowfast Mortar  
with Quartz

Flowfast  
Standard Sealer



Prepared Substrate

Flowfast  
Standard Primer





## Flowfast DQ (120 mils)

A slip resistant, decorative and fast cure MMA flooring system for use on pool decks and surrounds.



### Fast Cure:

Accelerates cure time, providing a fully operational surface in just 60 minutes.



### Slip Resistant:

Adjustable, positively textured profile to minimize pool side slip risks.



### Chemical Resistant:

Protects against acids, alkalis, salt solutions, chlorine and sanitizers.



### Decorative:

Available in vibrant quartz color mixes that can be matched to neighboring finishes.



### UV Resistant:

Exhibits excellent UV color stability over time and will not become brittle with age.

## Standard Colors:



Spring Glen



Gray Mist



Rococo



Blueberry Ice



Kitchen Red

### SLIP RESISTANCE:

BS 7976-2

Dry: 80  
Wet: 60

### IMPACT RESISTANCE:

ISO 6272

2.2 lb weight > 70 in  
4.4 lb weight > 59 in

### COMPRESSIVE STRENGTH:

ASTM C 579

11,600 psi

### BOND STRENGTH:

Greater than cohesive strength of 3,000 psi concrete,  
> 220 psi

### TENSILE STRENGTH:

ASTM C 307

2,900 psi

### FLEXURAL STRENGTH:

ASTM C 580

4,350 psi

### ABRASION RESISTANCE:

ASTM D 4060

CS 17 Wheel, 1000 cycles

0.080g loss

### TEMPERATURE RESISTANCE:

Continuous Exposure:

Up to 160°F

### VOC:

<50 g/l

### COEFFICIENT OF FRICTION:

ASTM D 2047

Exceeds ADA  
recommendations

### SPEED OF CURE:

32°F

70°F

90°F

Light Traffic

60 mins

45 mins

45 mins

Full Traffic

90 mins

60 mins

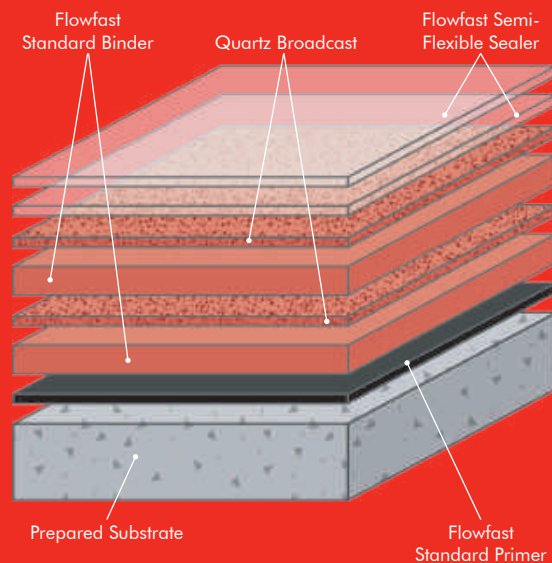
60 mins

Full Chemical Cure

120 mins

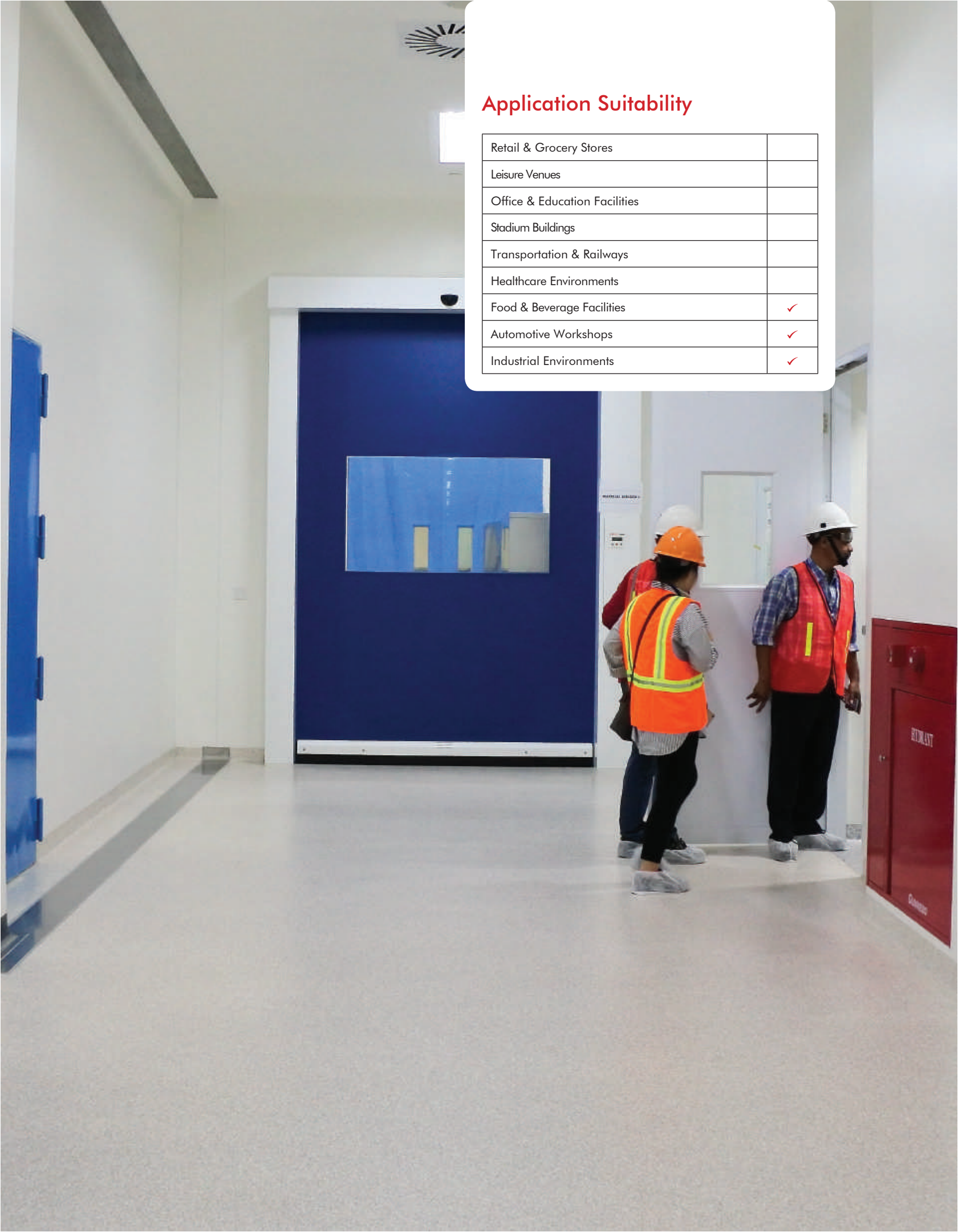
90 mins

90 mins



## Application Suitability

Retail & Grocery Stores	
Leisure Venues	
Office & Education Facilities	
Stadium Buildings	
Transportation & Railways	
Healthcare Environments	
Food & Beverage Facilities	✓
Automotive Workshops	✓
Industrial Environments	✓





## Flowfast Industrial (200 mils)

A hard wearing, chemical resistant and fast cure MMA flooring system with a matte colored finish.



### Fast Cure:

Accelerates cure time, providing a fully operational surface in just 60 minutes.



### Slip Resistant:

Adjustable, positively textured profile to minimize slip risks in wet or damp areas.



### Chemical Resistant:

Protects against acids, alkalis, caustic soda, salt solutions, oils, fats and sanitizers.



### Durable:

Offers excellent strength, providing a heavy duty, load bearing and robust floor finish.



### UV Resistant:

Exhibits excellent UV color stability over time and will not become brittle with age.

## Standard Colors:



The applied colors may differ from the examples shown. For a full color chart and samples, contact your local Key Resin Company office.

### SLIP RESISTANCE:

BS 7976-2	Dry: 80 Wet: 60
-----------	--------------------

### IMPACT RESISTANCE:

ISO 6272	2.2 lb weight > 70 in 4.4 lb weight > 59 in
----------	--

### COMPRESSIVE STRENGTH:

ASTM C 579	11,600 psi
------------	------------

### BOND STRENGTH:

Greater than cohesive strength of 3,000 psi concrete, > 220 psi

### TENSILE STRENGTH:

ASTM C 307	2,900 psi
------------	-----------

### FLEXURAL STRENGTH:

ASTM C 580	4,350 psi
------------	-----------

### ABRASION RESISTANCE:

ASTM D 4060 CS 17 Wheel, 1000 cycles	0.080g loss
---	-------------

### TEMPERATURE RESISTANCE:

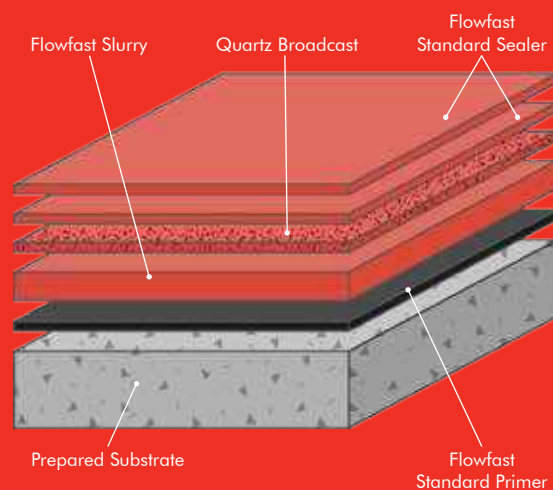
Continuous Exposure:	Up to 160°F
----------------------	-------------

VOC:	<50 g/l
------	---------

### COEFFICIENT OF FRICTION:

ASTM D 2047	Exceeds ADA recommendations
-------------	-----------------------------

SPEED OF CURE:	32°F	70°F	90°F
Light Traffic	60 mins	45 mins	45 mins
Full Traffic	90 mins	60 mins	60 mins
Full Chemical Cure	120 mins	90 mins	90 mins



# FlowResin

for the world at your feet™

An industry leader in seamless resin flooring, FlowResin provides much more than just a surface to walk on. Clients choose our seamless resin flooring systems for their appearance and wide array of performance advantages:

- ✓ Antimicrobial
- ✓ Chemical Resistant
- ✓ Easily Cleaned Surface
- ✓ Impact Resistance
- ✓ Low Temperature
- ✓ Slip Resistant
- ✓ Thermal Shock Resistant
- ✓ Anti-static
- ✓ Corrosion Protection
- ✓ Fast Cure
- ✓ Low Odor
- ✓ Moisture Tolerant
- ✓ Stain Resistant
- ✓ Wear Resistant

Key Resin Company manufactures FlowResin commercial and industrial systems in Batavia, Ohio and Phoenix, Arizona with convenient warehouse locations throughout the country. We proudly serve expanding business opportunities across the continent including the USA, Canada, Latin America and the Caribbean.

Let's talk about your next project and the best solution for 'the world at your feet'



\*Whilst every care has been taken to ensure that the information included in this document was accurate at the time of printing, we reserve the right to change product specifications at any time without prior notice. The photographs and colors reproduced in this publication are within the constraints of the printing process and are not to be used for matching purposes. All photographs are used for approximate representation only and may not show the actual products on offer. E&OE.