

Flowcrete

Case Study



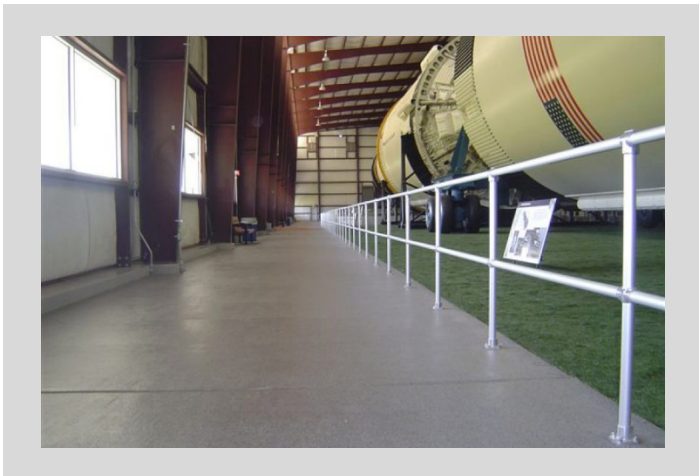
Client:	NASA
Project:	Fast Cure MMA
Products:	Flowfast
Location:	Houston, Texas

Flowcrete Joins the US Space Race

Flowcrete's mission statement, 'for the world at your feet' has taken on new meaning with a high-technology installation at the American space center NASA.

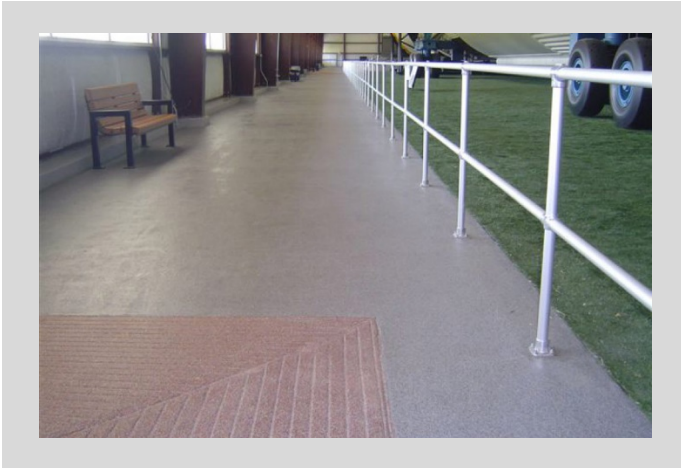
The center, which is considered NASA's primary base for human spaceflight activity, consists of a complex of 100 buildings constructed on 1,620 acres located in southeast Houston, Texas. Johnson Space Center is home to the United States astronaut corps and is responsible for training astronauts from both the U.S. and its international partners.

Almost 14,000m² of resin flooring from Flowcrete has been installed at the Johnson Space Center in Houston, Texas. The flooring work included all the exterior walkways around the Mission Control complex. Flowcrete's state-of-the-art surfaces were also used in the Saturn One Rocket Building, housing the Saturn One rocket used to send the Apollo space craft into outer space.



Flowcrete

Case Study



Flowcrete, supervised the installation which included the creation of an eye-catching logo at ground level in NASA's distinctive livery. Flowcrete used its Flowfast 'two-hour flooring concept' at NASA. This rapid curing system uses the latest resin technology to deliver a finished surface ready for use just two hours after application.

